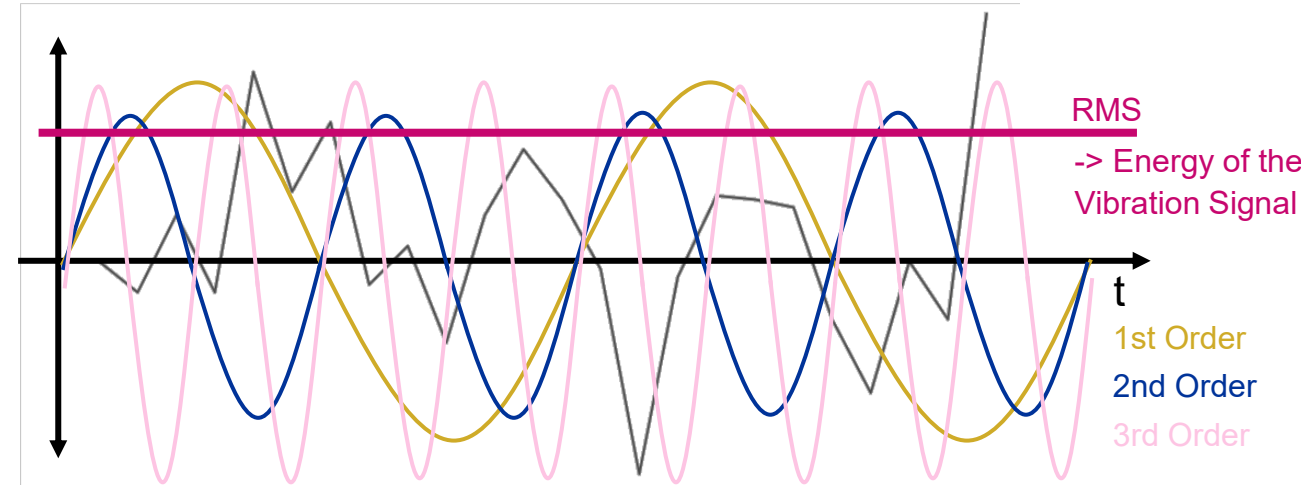
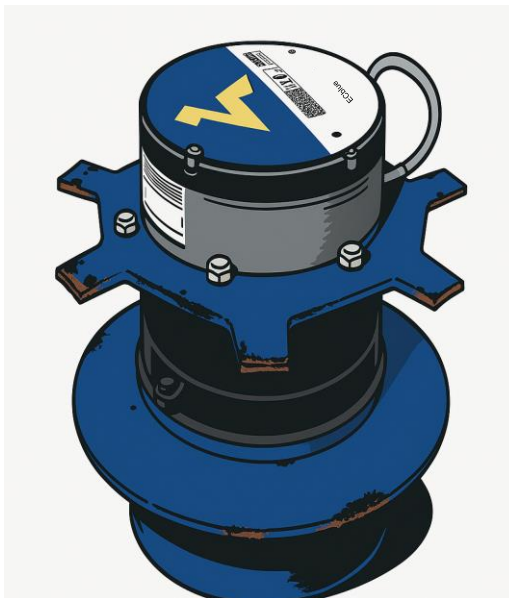
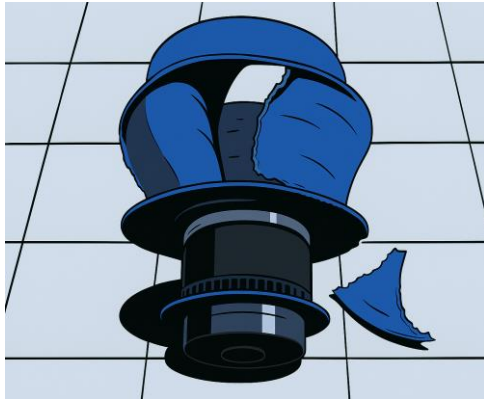


ZAset VibrationClient Launch Information

Moritz Schmitt – Product Management Digital & Controls

Today's Customer Pain Points

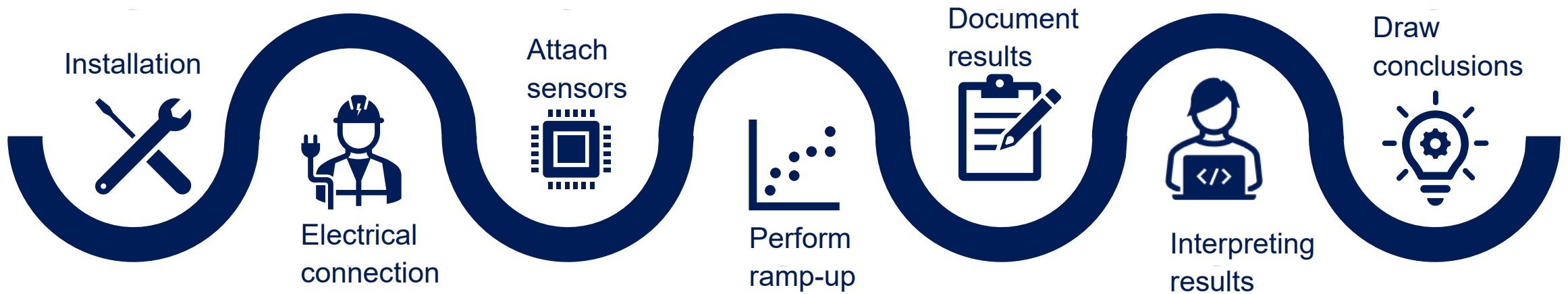


ZIEHL-ABEGG:
“Vibration Measurement
is a Key Step During
Commissioning”



From Measurement to Approval: current Vibration test Process

Complex Workflow with Multiple Stages



Time-consuming Process that requires advanced expertise and has frequent potential for errors Strong dependence on individual staff
→ **Further driven by the industry-wide shortage of experts**

The ZA Solution: Engineered for Your Specific Use Case



Why the ZA Solution Makes the Difference



Integrated Intelligence: No need for external sensors*

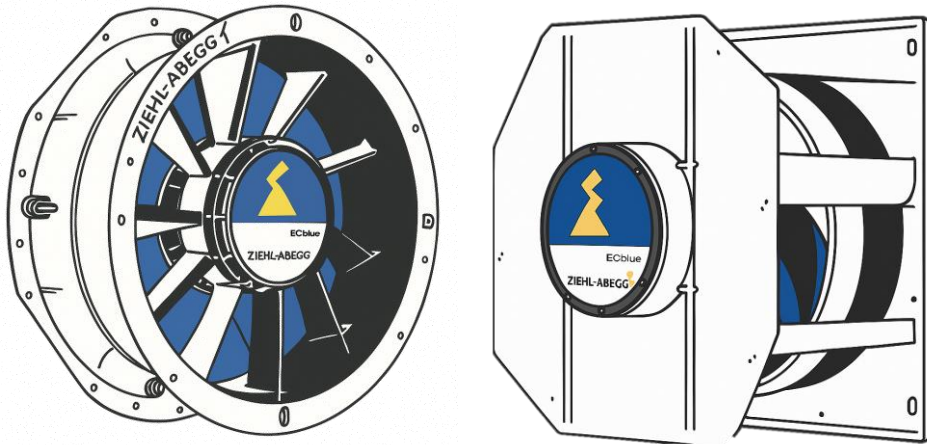


Simplified Ramp-Up Without Manual Programming



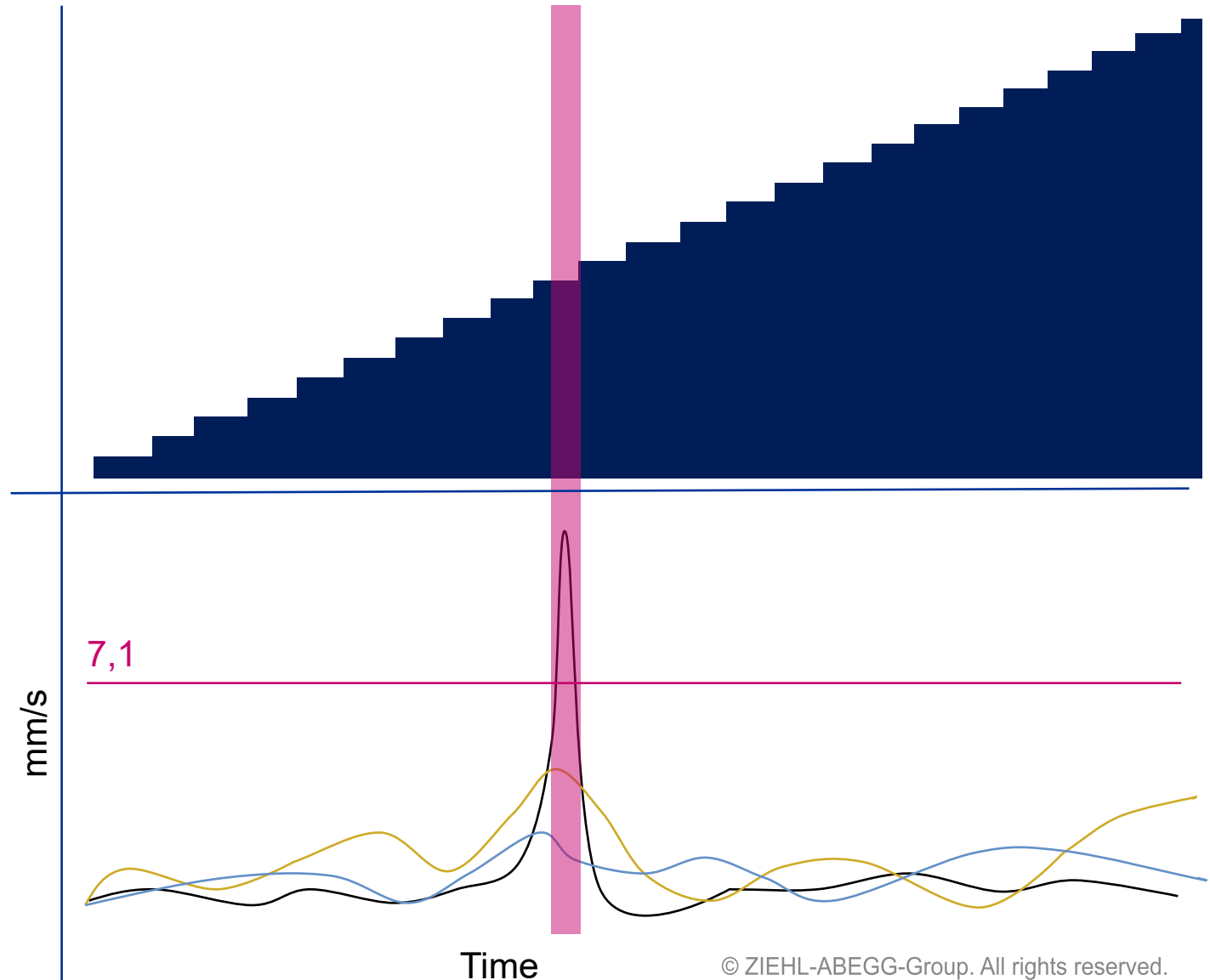
Streamlined and Consistent Result Documentation

The ZA Solution: Engineered for Your Specific Use Case

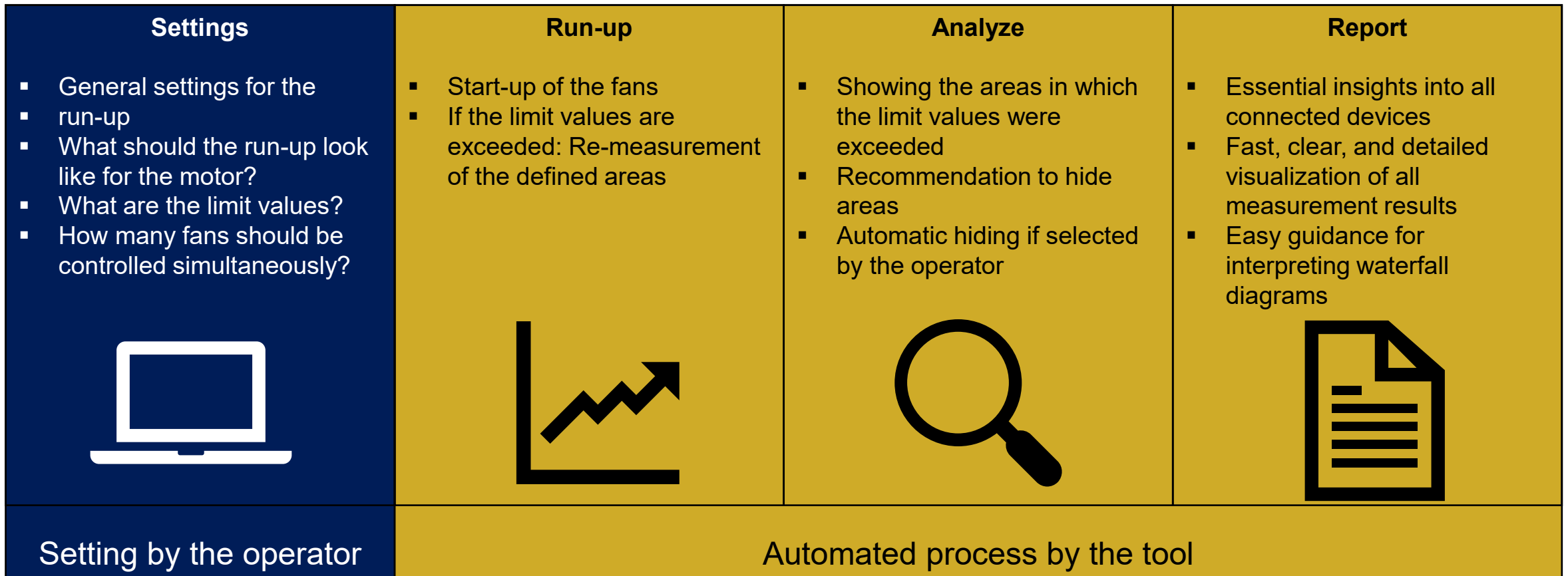


Suppressions and **acceptance tests** during commissioning

- **multiple** fans, automatic process & **Clear** criterias
- Transparent values **1-16 order** and **RMS**
- **Detailed** reports



How does ZAssetVibrationClient work?



Overview of Test Outcomes



MAINTENANCE

1

Overview of the Completed Test

ZIEHL-ABEGG

Übersicht

Seriennummer	Seriennummer	Beschreibung
34382518014	186595/A17	GR3SI-ZID.DC.CR
Adresse	Startzeit	Endzeit
1	04.12.2025 15:05:07 +01:00	04.12.2025 15:38:37 +01:00
Seriennummer	erfolgreich	
Bemerkung		

Übersicht analysierter Geräte:

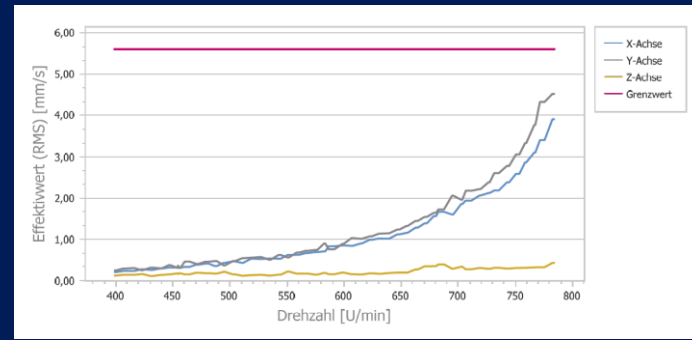
Zeitpunkt	Bereich 1 Start	Ende	Bereich 2 Start	Ende	Bereich 3 Start	Ende
Original	789	800	-	-	-	-
Messung	789	800	-	-	-	-
Final	789	800	-	-	-	-



END OF LINE COMMISSIONING

2

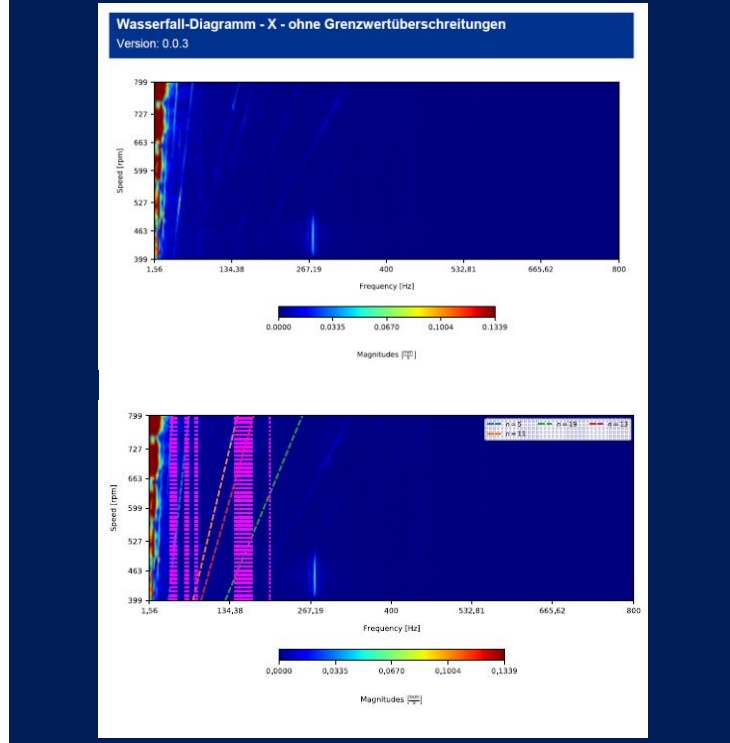
RMS Measurements Aligned with Normative Requirements



DEVELOPMENT

3

Waterfall Analysis and In-Depth Data Exploration



Functionality



Basic

“Speed and simplicity for system checks in the field”

No need for external Sensors

1st Order Analysis

Up to **10** devices

Standard report design

Online data storage



Advanced

“RMS insights for end-of-line testing and flawless commissioning”

No need for external Sensors

RMS Analysis

No device limit

Customizable report design

Online & Offline data storage



Professional

“See the full picture with professional deep-dive system analysis”

No need for external Sensors

Up to **16** Order Analysis + **RMS** + **Waterfall** diagrams

No device limit




Customizable report design

Online & Offline data storage

Why do we need a update?

Where do we need a motor update ?

Updates cannot be done in the field
→ new article numbers needed

 Standard Software	 New Software	 New Software
Basic	Advanced	Professional
<i>“Speed and simplicity for system checks in the field”</i>	<i>“RMS insights for end-of-line testing and flawless commissioning”</i>	<i>“See the full picture with professional deep-dive system analysis”</i>

Why do we need to update the motor?

- Advanced and Professional vibration analysis relies on additional raw and pre-processed data generated inside the motor. Standard motors do not provide this data depth.

ZAsset VibrationClient turning Vibration Data into real Business Value

- ✓ Fast, data-driven diagnostics
- ✓ Makes vibration analysis accessible
- ✓ Standardizes measurement and evaluation across sites and teams
- ✓ Delivers clear, ready-to-use reports for maintenance and management

ZIEHL-ABEGG

