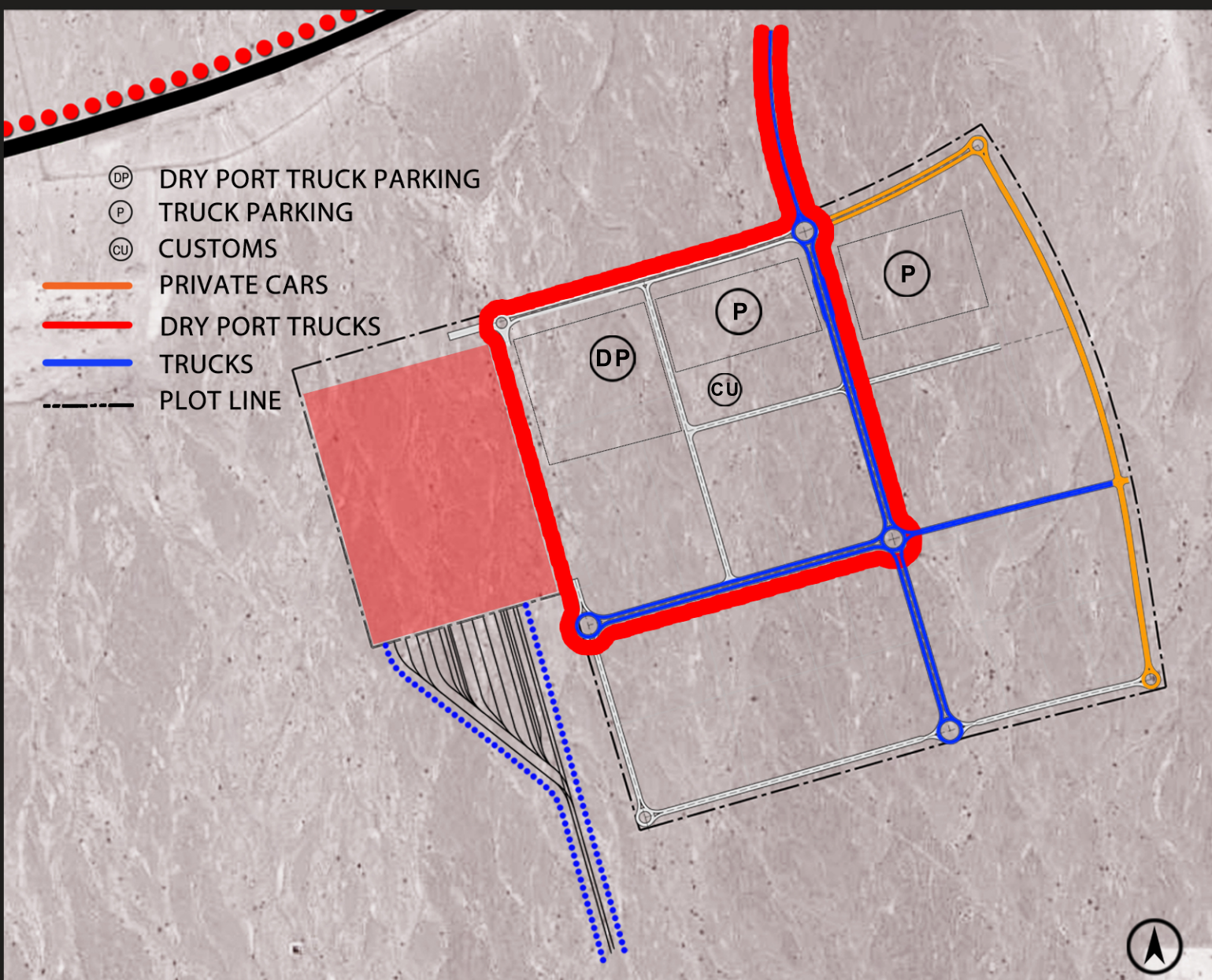


# South Batinah Logistics Area



## CIRCULATION

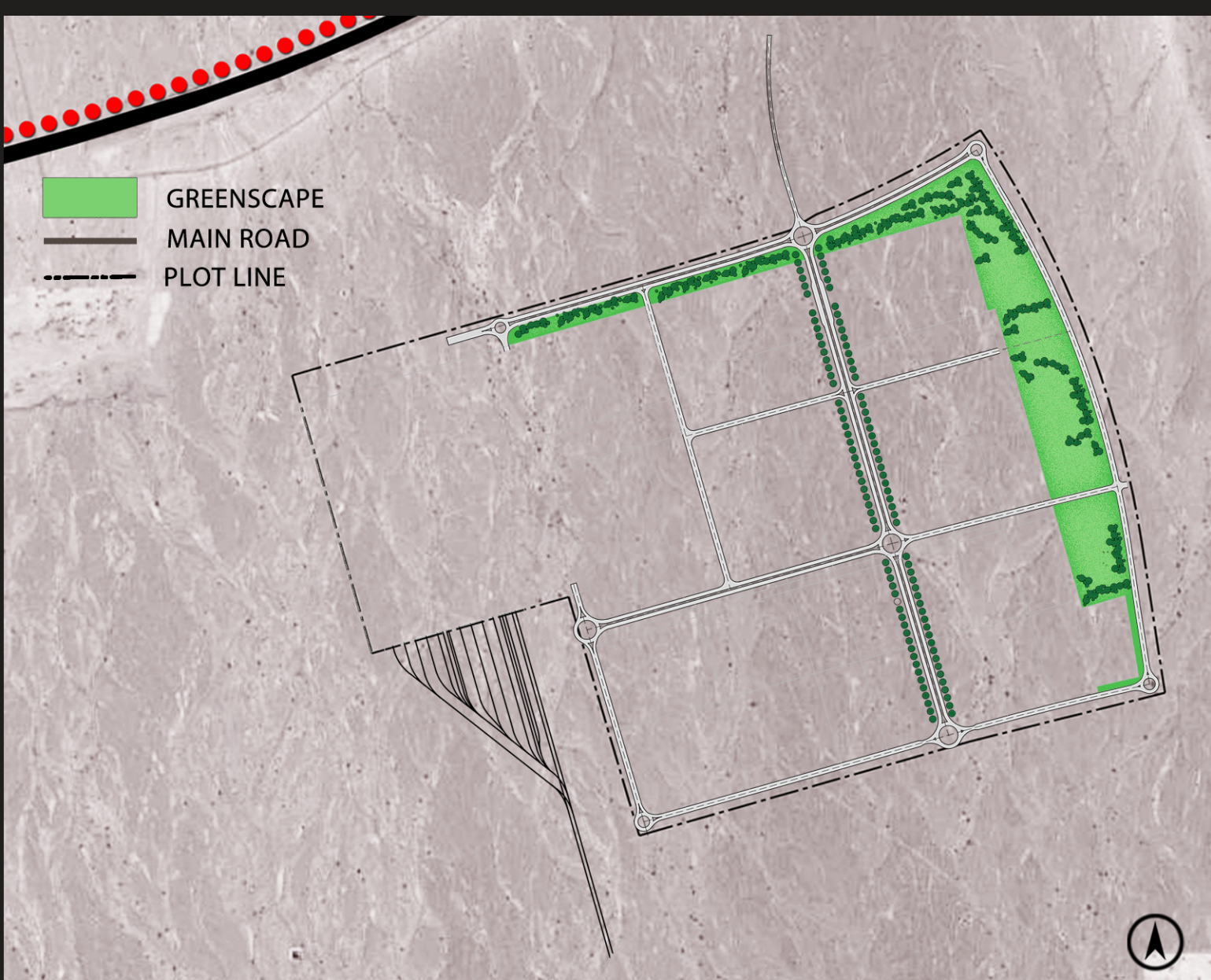
The circulation network is has been conceived to prevent any interference between car and truck circulation. A different separate truck route is also considered for the intermodal interchange. This separation of routes is to lessen the traffic interference between zones.



## SERVICE CORRIDOR

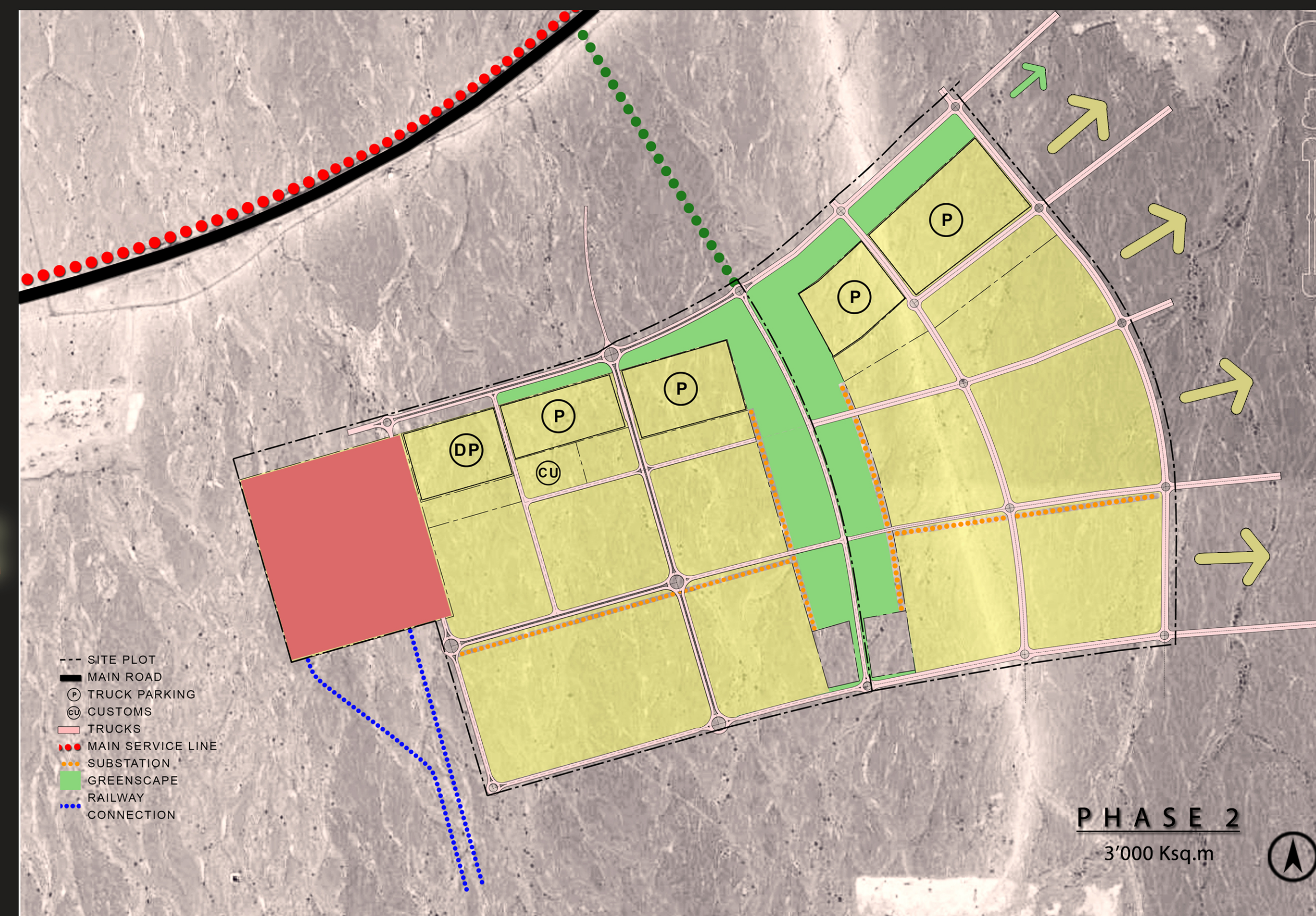
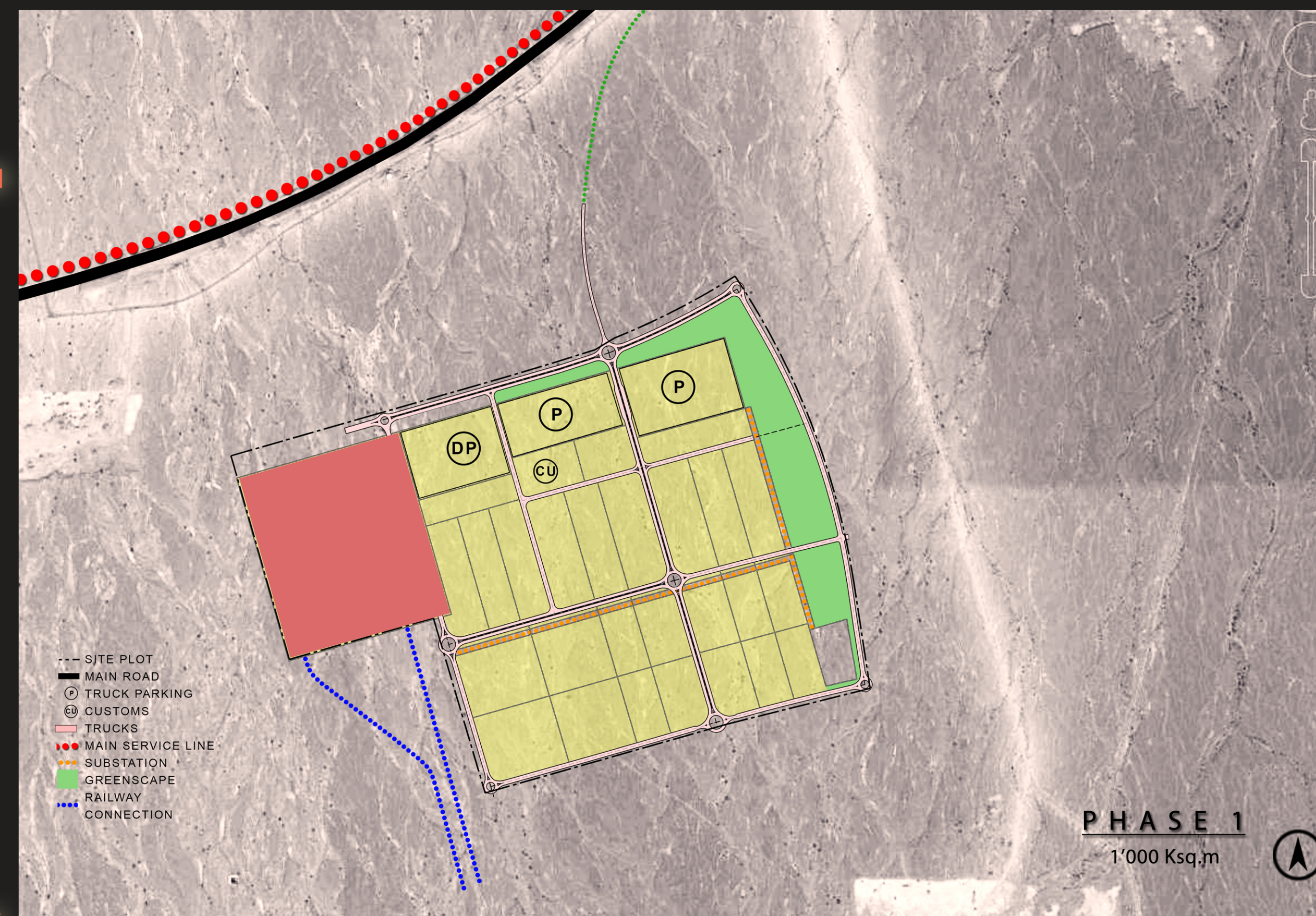
The main technical services will be located along the service corridor. Services included:

- stp/etp
- power substations
- gas supply
- solid waste collection
- water storage

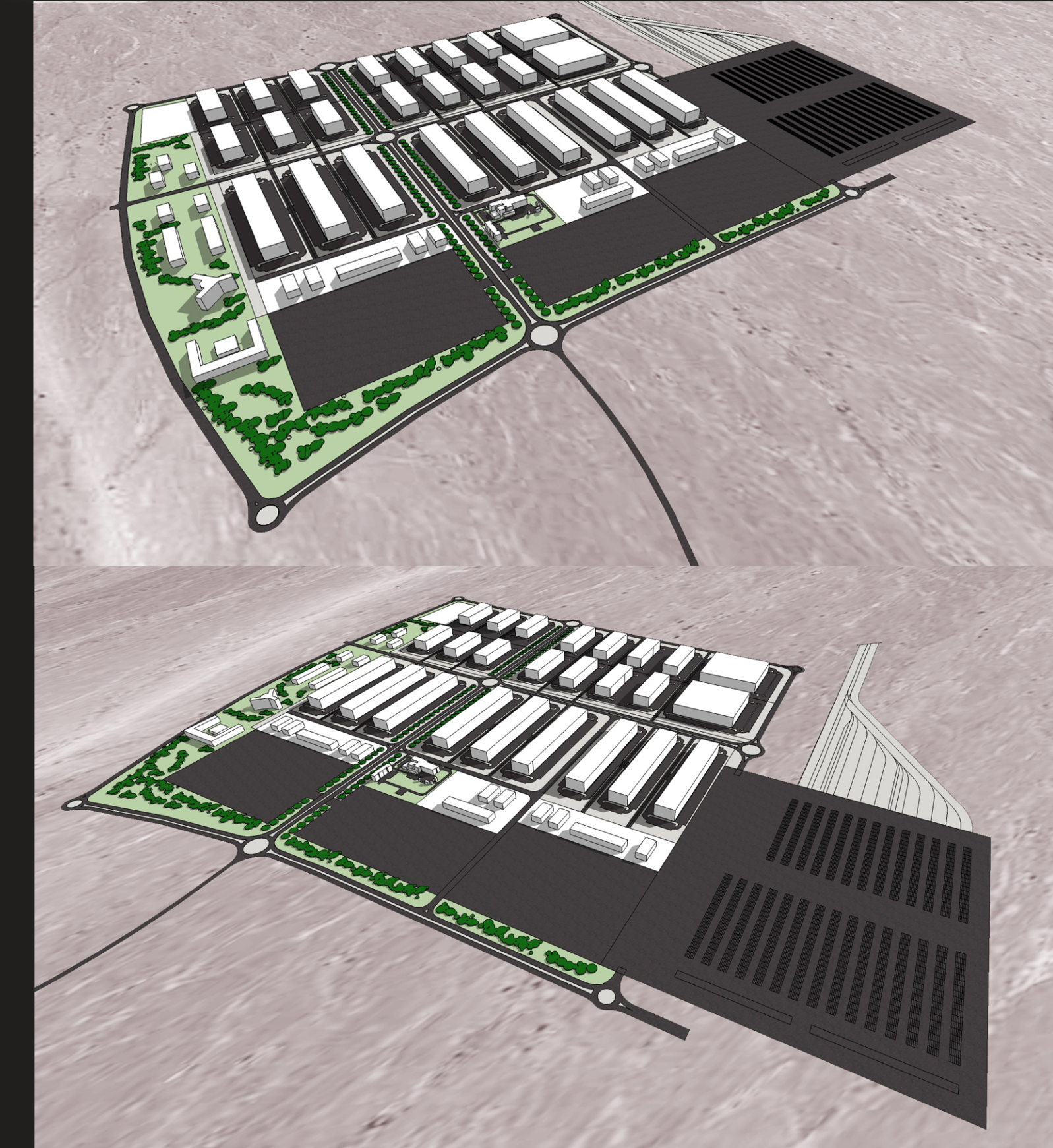


## GREEN SYSTEM

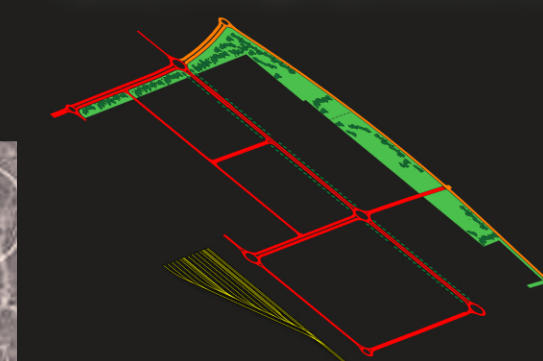
The green systems coincide with the common facilities. It is conceived to provide a buffer zone between the logistics area and the rest of the development.



## AERIAL PERSPECTIVES



## NETWORKS



The overall road network is designed in a basic grid to achieve a maximum efficiency in space and circulation.

Truck and private car vehicular access are well defined to avoid traffic interference.

Green spaces are strategically located to enhance the residential areas.

